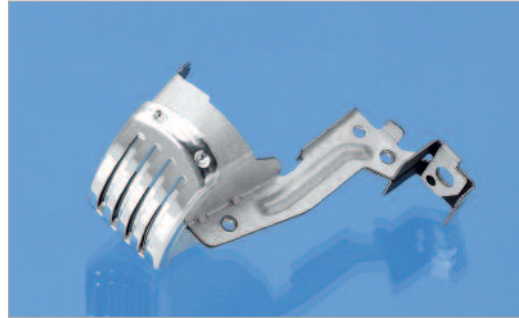


Bulb shield

0 mm 30 60



Application	head lamps
Annual quantity	200'000 pcs
Raw material	coated surface sheet metal/ Aluminium EN485-5

Bulb shield

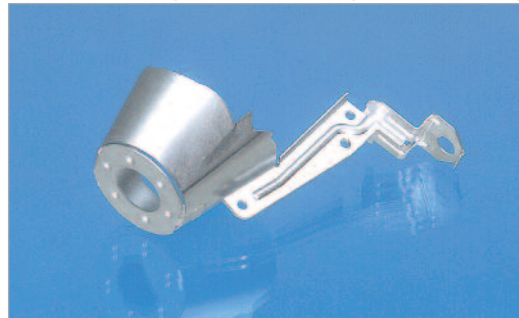
0 mm 40 80



Application	head lamps
Annual quantity	50'000 pcs
Raw material	stainless steel/chrome-plated

Bulb shield

0 mm 40 80



Application	head lamps
Annual quantity	300'000 pcs
Raw material	coated surface sheet metal EN10327

Bulb shield

0 mm 30 60



Application	head lamps
Annual quantity	250'000 pcs
Raw material	stainless steel/chrome-plated

Lamp holder H7

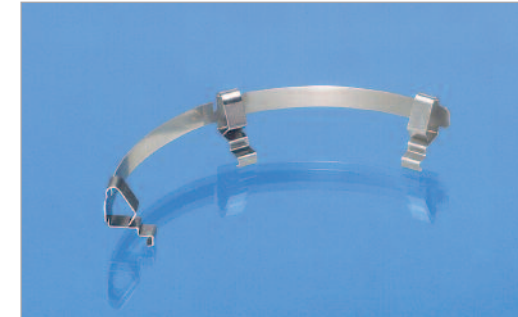
0 mm 75 150



Application	head lamps
Annual quantity	100'000 pcs
Raw material	coated surface sheet metal

Fixation spring

0 mm 45 90



Application	head lamps
Annual quantity	3'000'000 pcs
Raw material	stainless steel 1.4310/EN10258/EN10151

Lamp holder H7

0 mm 20 40



Application	head lamps
Annual quantity	3'000'000 pcs
Raw material	stainless steel 1.4310/EN10258/EN10151

Lamp holder

0 mm 25 50



Application	head lamps
Annual quantity	2'000'000 pcs
Raw material	coated surface sheet metal

Housing unit



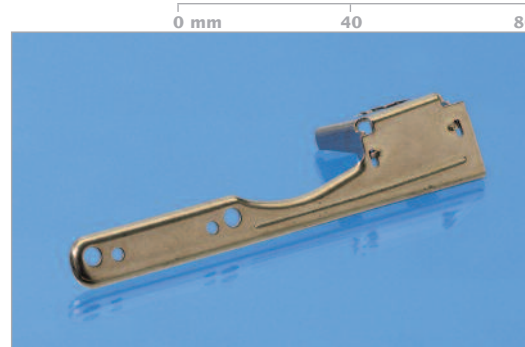
Application head lamps
 Annual quantity 500'000 pcs
 Raw material Aluminium EN485-4

Contact pin H7



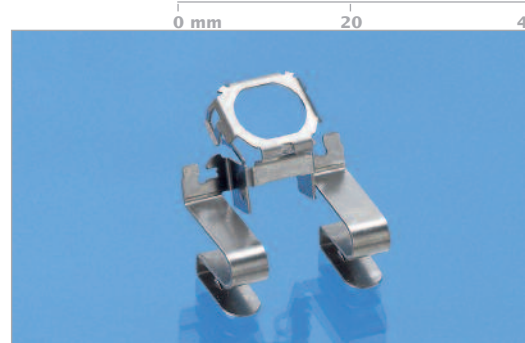
Application light bulb H7
 Annual quantity 55'000'000 pcs
 Raw material stainless steel 1.4016/EN 10088

Bracket



Application head lamps
 Annual quantity 50'000 pcs
 Raw material stainless steel 1.4301/EN 10088

Holding plate



Application head lamps
 Annual quantity 1'200'000 pcs
 Raw material stainless steel 1.4310/EN 10151



Lighting

Design without compromise

The parts produced by the «Automotive | Lighting» division are designed to meet high visual standards and technical requirements taking into account easy assembly and a low demand on space. Mainly, however, they have to remain resistant to environmental influences: high temperatures, low temperatures and salty air. High-volume production requires the uppermost degree of production safety. The packaging is specially aligned to meet the needs of downstream automated assembly.

Oskar Rüeegg has a solution for your needs, fast and perfect.

Take our word for it.

METAL MOLDED PARTS

- Automotive Infotainment **Lighting** Interior solutions Connectors/Shieldings Motor management
- Building/Lighting
- Electronics/Connectors

ASSEMBLING GROUP

- Assemblies